

**LAST REMAINING  
OFFICE SUITE**

**STATE  
HS.**

DALE STREET LIVERPOOL L2 4TR



## **TO LET CONTEMPORARY OFFICE SPACE**

- NEWLY REMODELLED, FULLY AIR  
CONDITIONED, STYLISH OFFICE SPACE**
- IDEAL CITY CENTRE LOCATION**
- FULLY SELF CONTAINED SPACE**

## DESCRIPTION

State House comprises of ground and eight upper floors accessed via the main lift foyer, all floors are of a flexible rectangular shape.

The building has been remodelled to create contemporary designed and styled accommodation that exceeds the demands of today's office occupier.

Common areas are bright yet minimalist in design.

Offices have an abundance of windows which create high levels of natural light. Suites are regular in shape providing total flexibility for space planning.

## SPECIFICATION

- Feature spot lighting
- Under floor power
- Low static carpeting
- Full decoration
- Self contained WC and kitchen facilities to each suite
- Air conditioning



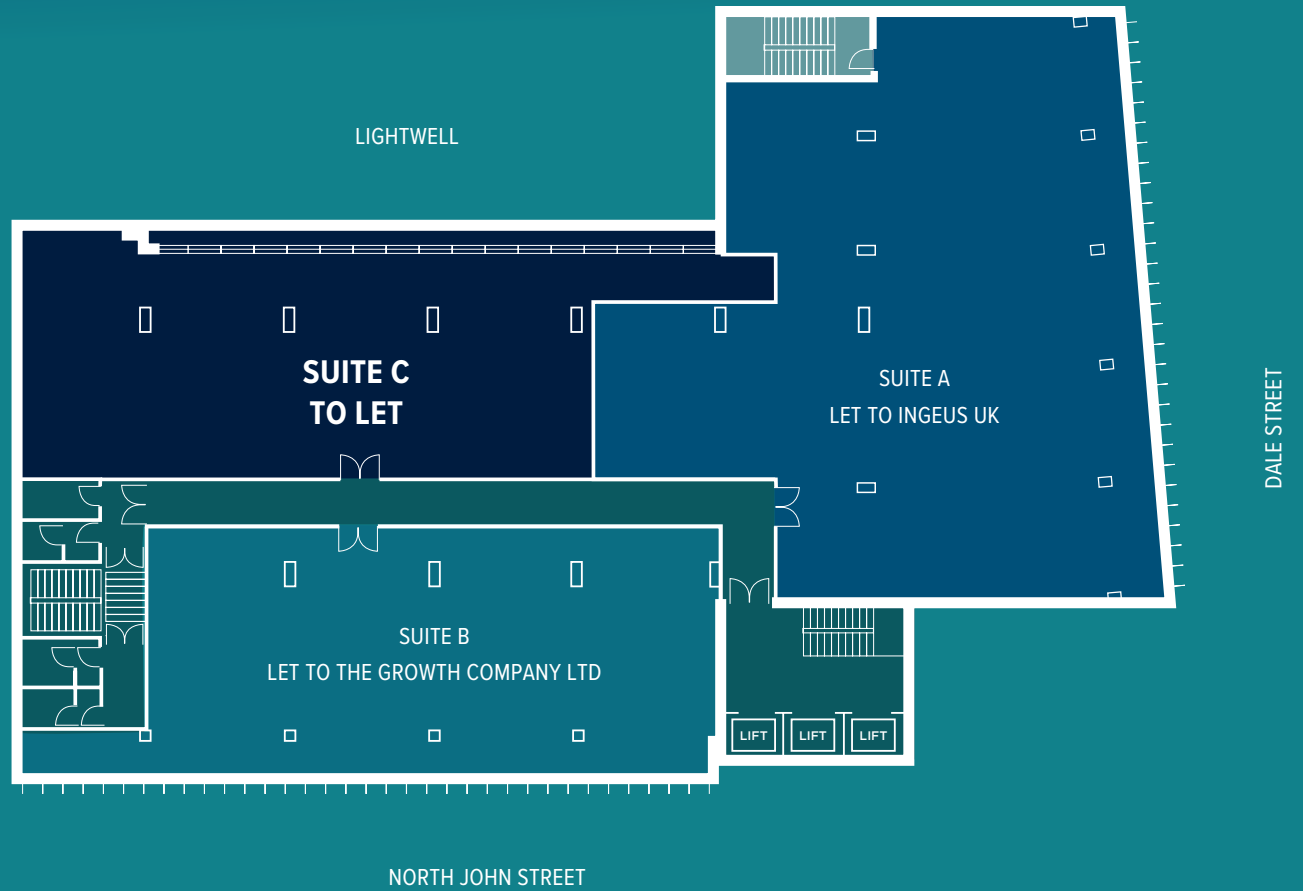
STATE  
HS.

## ACCOMMODATION

SQ M    SQ FT

Suite C    191.8    2,065

## FIRST FLOOR



## AMENITIES



### BUILDING

The main entrances are covered by CCTV cameras which are linked to monitors and recording equipment.



### SECURITY

Door access to occupiers via a key pad operated security system. 24hrs a day, 7 days a week.



### INTERNET ACCESS

Dedicated Internet Access available within 24 Hours – Up to 10Gbps available via Telcom or Baltic Broadband.



### KITCHEN FACILITIES

Self contained kitchen facilities to each suite.



### RESTAURANTS & LEISURE

The close by Castle Street, Liverpool One and the surrounding area offers a wide selection of bars, restaurants and leisure facilities.



### RAIL

Moorfields and James Street Merseyrail stations are a few minutes walk, with connections to the Wirral, the Northern Line and the main line station - Liverpool Lime Street.



### BUS

Regular bus services run along Dale Street and the Liverpool One Bus station is a 9 minute walk, with Queens Square Bus Station 7 minutes walk.



### PUBLIC CAR PARKS

There are several public and private car parks within a few minutes walk of the building.

# STATE HS.

## LOCATION

State House occupies a highly prominent position in the heart of Liverpool City Centre.

The building is situated within the Central Business District on the corner of Dale Street and North John Street. It is within 200m of the retail quarter and 400m of the Liverpool One shopping sector.

Castle street and it's wealth of restaurants and bars is only a short walk away.

The building is also perfectly located to take advantage of some of the City's popular cultural attractions, including the Albert Dock, the World Museum Liverpool, the Empire Theatre, The Royal Court Theatre, The Playhouse Theatre, St George's Hall, Central Library and the Walker Art Gallery.

# STATE HS.



# STATE HS.



## Retail/Leisure

- 1 Liverpool ONE
- 2 The Met Quarter
- 3 Museum of Liverpool
- 4 M&S Bank Arena  
ACC Convention Centre  
Exhibition Centre Liverpool

## 5 Castle Street area restaurants/bars:

- San Carlo
- Bacaro
- Restaurant Bar & Grill
- The Alchemist
- Castle Street Town House
- Elif
- Pho
- So Salsa
- Rudys Pizza
- BoBo
- Mowgli
- Viva Brazil
- McGuffie & Co
- Fazenda
- El Gato Negro
- Riva Blu

## 6 Albert Dock restaurants:

- Gusto
- Lerpwl
- Lunya Lita
- Maray
- Madre
- Miller & Carter
- Panam
- Revolución de Cuba

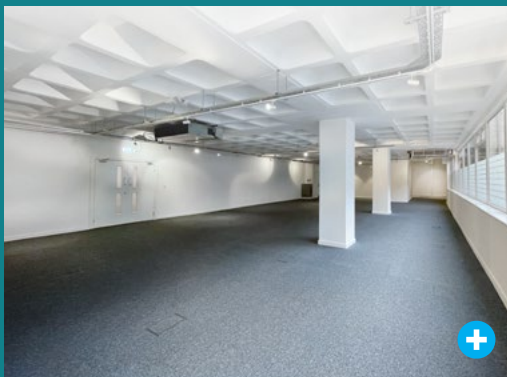
## Hotels:

- 7 Hard Days Night
- 8 Hotel Indigo
- 9 Travelodge
- 10 Crowne Plaza
- 11 Malmaison
- 12 Atlantic Tower

- 13 Radisson Blue
- 14 Inside

## Travel

- M Liverpool ONE Bus Station
- M James Street Station - James St Entrance
- M James Street Station - Water St Entrance
- M Moorfields Station - Moorfields Entrance
- M Moorfields Station - Old Hall St Entrance



STATE  
HS.



# STATE HS. Directory

- Floor 1
- Floor 2
- Floor 3
- Floor 4
- Floor 5
- Floor 6
- Floor 7
- Floor 8







**STATE HS.**

**TO LET**  
ENJOY WORKING IN OUR  
NEWLY REMODELLED, STYLISH  
OFFICE SPACE...

FROM  
**£10**  
PER SQ FT

BENEFIT FROM OUR IDEAL  
CITY CENTRE LOCATION AND  
A BUILDING THAT OFFERS  
EXCELLENT DIGITAL  
CONNECTIVITY!

For more information  
please contact the  
joint sole agents

**Hitchcock Wright**  
0151 227 3400  
Brian.Rekents@hwardo.co.uk  
Mobile 07970 837 854

**mason owen**  
0151 242 3000  
Mark.Coulthart@masonowen.com  
07707 685 598



# STATE HS. Directory

Floor 1

Floor 2

Floor 3

Floor 4

Floor 5

Floor 6

Floor 7

Floor 8

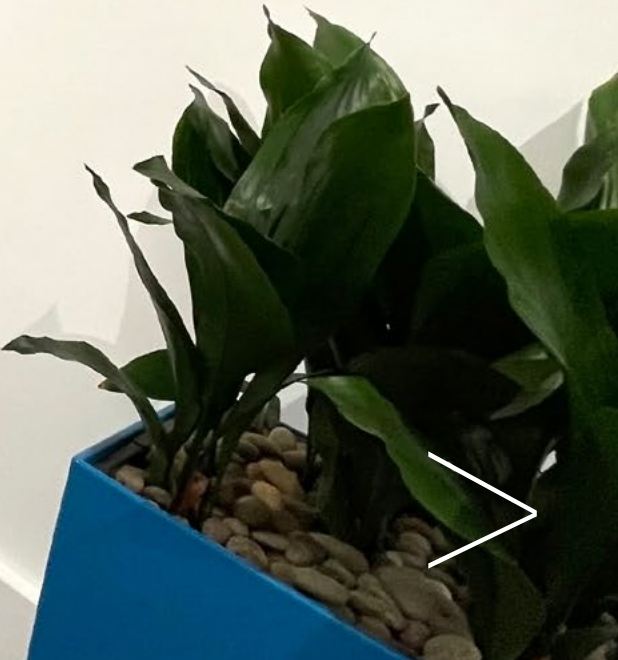


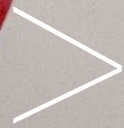




Sign with directional arrows and a circular icon.

1













## RENT

Rent on application.

## TERMS

The property is available by way of a new lease on terms to be agreed.

## BUSINESS RATES

Contact the agents for further details.

## EPC

The Energy Performance Certificate is available on request.

## VAT

All prices are exclusive but may be liable to VAT at the prevailing rate.

## LEGAL COSTS

Each party to be responsible for their own legal fees incurred in the transaction.

## ANTI-MONEY LAUNDERING

A successful applicant will be required to provide the usual information to satisfy the AML requirements when Heads of Terms are agreed.

## FURTHER INFORMATION

For further information, or to arrange a viewing, please contact the joint agents:



**Hitchcock Wright**  
CHARTERED SURVEYORS & Partners

**0151 227 3400**

BrianRicketts@hwdp.co.uk

**Mason Owen**

0151 242 3000  
masonowen.com

liam.barlow@masonowen.com

MISREPRESENTATION ACT: Hitchcock Wright & Partners and Mason Owen for themselves and for the vendors or lessors of this property, whose agents they are, give notice that: a) all particulars are set out as a general outline only for the guidance of intending purchasers or lessees, and do not comprise part of an offer or contract; b) all descriptions, dimensions, references to condition and necessary permissions for use and occupation and other details are given in good faith and are believed to be correct but any intending purchasers or tenants should not rely on them as statements or representations of fact but must satisfy themselves by inspection or otherwise as to the correctness of each of them. c) no person in the employment of Hitchcock Wright & Partners and Mason Owen has any authority to make any representation or warranty whatsoever in relation to this property.

Code of Leasing Business Premises – Please be aware of the RICS Code for Leasing Business Premises which can be found on: [https://www.rics.org/globalassets/rics-website/media/upholding-professional-standards/sector-standards/real-estate/code-for-leasing\\_ps-version\\_feb-2020.pdf](https://www.rics.org/globalassets/rics-website/media/upholding-professional-standards/sector-standards/real-estate/code-for-leasing_ps-version_feb-2020.pdf)

We recommend you obtain professional advice if you are not represented

Design: Alphabet Design, Liverpool. October 2024.